

Wake™ Pro 230

Stability, power and music
to tow like a pro.

What's New

- 10.25 in. touchscreen display

Key Features

- iBR - Intelligent Brake & Reverse
- iDF - Intelligent Debris-Free Pump System
- Watertight phone compartment
- Direct-access front storage
- Boarding ladder
- Large swim platform with LinQ® attachment system
- VTS (Variable Trim System)
- **Wake Package:**
 - LinQ retractable ski pylon
 - Speed-based ski mode
 - Removable wakeboard rack
 - Wake graphics

 Sand and Dazzling Blue




Rotax® 1630 ACE™ - 230

ST3® Hull

BRP Audio - Premium System

CAPACITY

Rider Capacity	
Weight Capacity	600 lb / 273 kg
Fuel Capacity	18.5 US gal / 70 L
Glove Box	0.8 US gal / 2.9 L
Front Bin	25.3 US gal / 96 L
Storage Capacity Total	26.1 US gal / 98.9 L

DIMENSIONS

Length (bumper to bumper)	135.8" / 345 cm
Width	49.4" / 125.5 cm (w/o rack)
Height	44.9" / 114 cm

HULL

Type	ST3 Hull
Material	Fiberglass

FEATURES

- Ergolock™ two-piece seat
- Seat strap
- RF D.E.S.S.™ key
- Wide-angle mirrors
- Handle grip with palm rest
- Footwell carpets
- Ski tow eye
- Tilt steering
- USB port

ROTAX ENGINE

1630 ACE - 230

Horsepower	230 hp
Intake System	Supercharged with external intercooler
Displacement	1,630 cc
Cooling	Closed-Loop Cooling System (CLCS)
Reverse System	Electronic iBR®*
Fuel Type	98 Octane
Throttle System	iTC™ (Intelligent Throttle Control)
Exhaust System	D-Sea-Bel™ system

GAUGE

Type of Gauge	10.25 in. touchscreen display
Main Functions	<ul style="list-style-type: none"> • BRP Connect • Music • Navigation • Bluetooth* connectivity • Speedometer • RPM • Clock • VTS™ • Fuel consumption • Fuel autonomy • Vehicle hours • Water temperature
iTC System - Mode	Eco®, Sport, Speed Regulator, Slow Speed Mode & Ski Mode

WEIGHT

Dry Weight	836 lb / 379 kg
------------	-----------------

WARRANTY

BRP limited warranty covers the watercraft for two years, applicable to Australia and New Zealand

*Electronic brake, neutral and reverse.

©2026 Bombardier Recreational Products Inc. (BRP). All rights reserved. ®, TM and the BRP logo are trademarks of Bombardier Recreational Products Inc. or its affiliates. In the USA, products are distributed by BRP US Inc. *All other trademarks are the property of their respective owners. BRP reserves the right to discontinue or change specifications, prices, designs, features, models or equipment without incurring obligation. Some models shown may include optional equipment. Product performance may vary depending on external factors. All competitive comparisons are based on published manufacturer specifications at time of creating this document. The warranty is subject to the exclusions, limitations of liabilities and all other terms and conditions of BRP's standard limited warranty. Read the operator's guide and safety instructions. All models of PWOC are meant to be used by drivers of age 16 and older. Observe applicable laws and regulations. Always wear appropriate protective clothing, including a personal flotation device and neoprene shorts. Riding and alcohol/drugs don't mix.

SEA-DOO®





 Sand and Dazzling Blue

Feature Highlights



10.25 in. Touchscreen Display

Bring your on-water experience to another level with this premium and elegant touchscreen display developed specifically for Sea-Doo riders. Enjoy enhanced connectivity and intuitive features including ride statistics, a compass, media control, marine navigation with the BRP GO! app and much more.¹



BRP Audio - Premium System

A factory-installed, truly waterproof Bluetooth[®] audio system for an extra dose of fun and entertainment on the water.



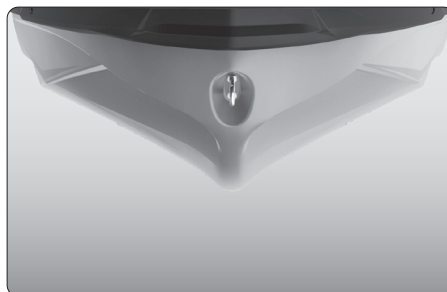
Watersport Essentials

Everything you need to practice watersports. A quick-install retractable ski pylon that stows away when not in use. Features spotter hand grips and rope storage. A wakeboard rack provides convenient storage and transport of a wakeboard.²



Rotax 1630 ACE - 230 Engine

This powerful engine comes standard with a supercharger and external intercooler.



ST3 Hull

An innovative hull that sets the benchmark for rough water handling, stability, and offshore performance.



Direct-Access Front Storage

All your gear within arm's reach thanks to a 25.3 US gal (96 L) front storage area, easily accessible from a seated position. Simply raise the handlebars to access essentials for any adventure.