

FishPro™ Sport 170

Find yourself a new perspective on sportfishing with the stable, versatile vehicle that started it all.

Key Features

- Ergolock™ two-piece fishing seat
- Garmin® 7" Keyed GPS & Fish Finder
- BRP Audio - Premium System (optional)
- 5 fishing rod holders
- Rear Deck Extension with LinQ®
- LinQ fishing cooler (13.5 US gal / 51 L)
- Direct access front storage with bin organizer
- VTS (Variable Trim System)
- 2 LinQ front supports



 White and Gulfstream Blue

Rotax® 1630 ACE™ - 170

ST3® Hull

iDF - Intelligent Debris-Free System

CAPACITY

Rider Capacity	
Weight Capacity	600 lb / 273 kg
Rear Platform Capacity (without passenger)	221 lb / 100 kg
Fuel Capacity	18.5 US gal / 70 L
Glove Box	0.8 US gal / 2.9 L
Front Bin	25.3 US gal / 96 L
LinQ Fishing Cooler	13.5 US gal / 51 L
Storage Capacity Total	39.6 US gal / 149.9 L*

DIMENSIONS

Length (bumper to bumper)	146.8" / 373 cm
Width	49.6" / 126 cm
Height	45.3" / 115 cm

HULL

Type	ST3 Hull
Material	Fiberglass

FEATURES

- Seat strap
- iBR® - Intelligent Brake & Reverse**
- RF D.E.S.S.™ key
- Boarding ladder
- Watertight phone compartment
- Wide angle mirrors
- Handle grips with palm rest
- Footwell carpets
- Large swim platform
- Cup holder
- USB port
- Tilt steering
- Ski tow eye

ROTAX ENGINE	1630 ACE - 170
Horsepower	170 hp
Intake System	Naturally aspirated
Displacement	1,630 cc
Cooling	Closed-Loop Cooling System (CLCS)
Reverse System	Electronic iBR
Fuel Type	91 Octane
Throttle System	iTC™ (Intelligent Throttle Control)
Exhaust System	D-Sea-Bel™ system

GAUGE

Type of Gauge	7.6 in. digital display
Main Functions	<ul style="list-style-type: none"> Speedometer RPM Clock VTS™ Fuel autonomy Water temperature Vehicle hours
iTC System - Mode	Eco®, Sport, Speed Regulator, Trolling (Slow Speed) & Accessory Mode

WEIGHT

Dry Weight	852 lb / 386 kg 871 lb / 395 kg (with sound system)
------------	--

WARRANTY

BRP limited warranty covers the watercraft for two years, applicable to Australia and New Zealand

*Total storage capacity includes LinQ fishing cooler. **Electronic brake, neutral and reverse.

©2026 Bombardier Recreational Products Inc. (BRP). All rights reserved. ®, TM and the BRP logo are trademarks of Bombardier Recreational Products Inc. or its affiliates. In the USA, products are distributed by BRP US Inc. *All other trademarks are the property of their respective owners. BRP reserves the right to discontinue or change specifications, prices, designs, features, models or equipment without incurring obligation. Some models shown may include optional equipment. Product performance may vary depending on external factors. All competitive comparisons are based on published manufacturer specifications at time of creating this document. The warranty is subject to the exclusions, limitations of liabilities and all other terms and conditions of BRP's standard limited warranty. Read the operator's guide and safety instructions. All models of PWC are meant to be used by drivers of age 16 and older. Observe applicable laws and regulations. Always wear appropriate protective clothing, including a personal flotation device and neoprene shorts. Riding and alcohol/drugs don't mix.

SEA-DOO®



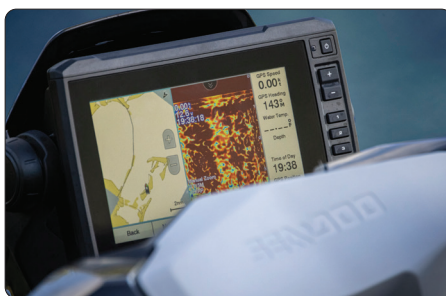


 White and Gulfstream Blue

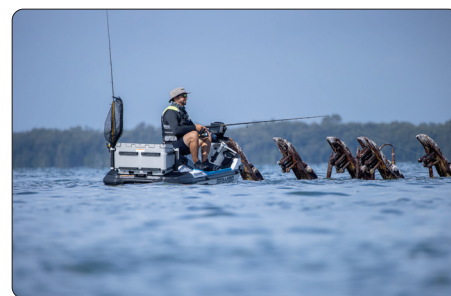
Feature Highlights



iDF - Intelligent Debris Free System
An innovative, industry-first system that allows you to free your pump of weeds and debris with intuitive handlebar-activated controls.



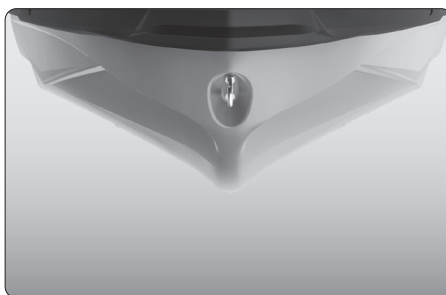
Garmin 7" GPS & Fish Finder
A top-of-the-line navigation, charting and fish-finding system using an in-hull transducer and mid-CHIRP sonar. Includes token for access to free upgraded regional maps.



Angled Gunwale Footrests
Ensures ergonomic and secure posture while fishing from a side position.



Rotax 1630 ACE - 170 Engine
The Rotax 1630 ACE - 170 combines plenty of naturally aspirated power and economy, meaning the adventure can be exhilarating and prolonged.



ST3 Hull
An innovative hull that sets the benchmark for rough water handling, stability, and offshore performance.



Rear Deck Extension with LinQ attachment system
Adds 11.5 inches to the back of the watercraft to increase stability, space, and storage capability.